



GAT MONTHLY MEMBERSHIP PROGRESS REPORT

Results as of: 3/31/2022

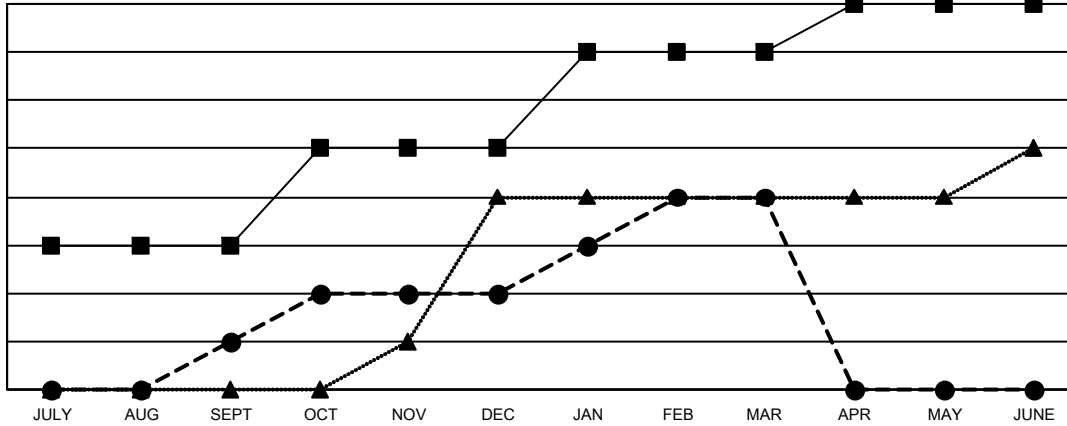
Multiple District 18

LOCATION: GEORGIA

| Clubs | | | |
|-----------------------|---------------|-----------|---------------|
| RESULTS FOR 2021-2022 | | | |
| QUARTER | NEW CLUB GOAL | NEW CLUBS | DROPPED CLUBS |
| JULY/AUG/SEPT | 3 | 1 | 3 |
| OCT/NOV/DEC | 2 | 1 | 3 |
| JAN/FEB/MAR | 2 | 2 | 1 |
| APR/MAY/JUNE | 1 | 0 | 0 |

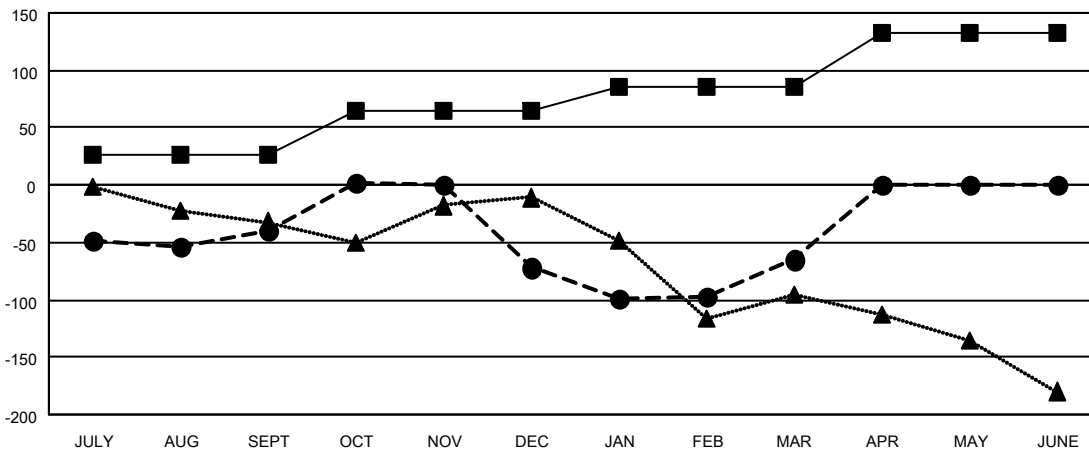
| Members | | | |
|-----------------------|------------------------|----------------------|--|
| RESULTS FOR 2021-2022 | | | |
| QUARTER | MEMBER GROWTH NET GOAL | MEMBER GROWTH ACTUAL | DROPPED MEMBERS ACTUAL (including transfers) |
| JULY/AUG/SEPT | 26 | 158 | 188 |
| OCT/NOV/DEC | 39 | 138 | 146 |
| JAN/FEB/MAR | 21 | 183 | 160 |
| APR/MAY/JUNE | 46 | 0 | 0 |

GOALS AND ACTUAL NEW CLUBS CUMULATIVE



- CURRENT YEAR GOALS FOR NEW CLUBS
- CURRENT YEAR ACTUAL NEW CLUBS
- ▲- LAST YEAR ACTUAL NEW CLUBS

GOALS AND ACTUAL MEMBERS CUMULATIVE



- MEMBER GROWTH NET GOAL
- MEMBER GROWTH ACTUAL
- ▲- LAST YEAR MEMBERSHIP ACTUAL

| | |
|------------------------|------------|
| DROPPED CLUBS: 7 | |
| DROPPED MEMBERS | |
| DECEASED | 67 |
| CLUB CANCELLED | 73 |
| OTHER | 354 |
| TOTAL | 494 |

103 CLUBS OF 206 ADDED 1 OR MORE NEW MEMBERS

[CLICK HERE FOR CUMULATIVE MEMBERSHIP DATA](#)

| GENDER DISTRIBUTION | |
|--|----------------|
| MALE | 2,774 (63.30%) |
| FEMALE | 1,606 (36.65%) |
| NON BINARY | 0 (0.00%) |
| PREFER NOT TO ANSWER | 2 (0.05%) |
| TOTAL FAMILY UNIT MEMBERS | 774 |
| FAMILY MEMBERS PAYING HALF DUES | 400 |